

FYLDE MICRO

Pioneers in MPT1327 radio trunking



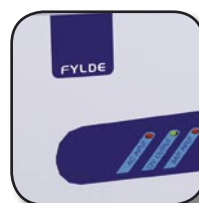
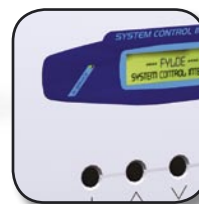
Network Management (SYSCON)

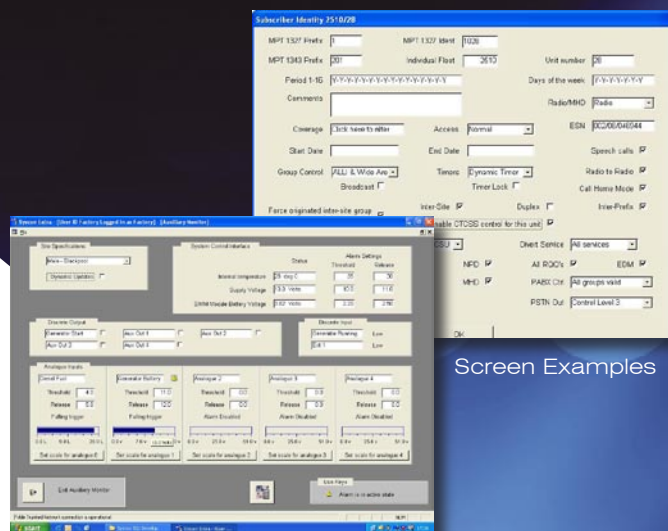
Fylde's System Control Terminal, SYSCON, operates in conjunction with the infrastructure to provide user management and system control functions. SYSCON offers a full set of diagnostic tools, covering every aspect of network operation.

User Control

- User management allows fine grain control of subscribers and their facilities.
- Automatic call queuing for called party and channel busy.
- Calls automatically connect when a channel or called party becomes free.
- Call records: each call made throughout the network is logged.
- Calling and called parties are logged, along with 17 other attributes.
- Call timers - controlled by call type and time of day or subscriber.
- PABX / PSTN - control of prohibited numbers.
- Coverage - controls the radios roaming capability.

See over for more information >>





Screen Examples

Remote monitoring

- Alarms based on site status - generator fuel - battery voltages - intruder - etc.
- Forwarding of system events via e-mail or text message.

Remote client

- The Remote Client package allows re sellers to remotely configure their allocated users using a web browser interface.

Network analysis

- Automatic creation of usage summary.
- Call logging - detailed record of each call.
- Call analysis - statistical analysis of the raw data.
- Report generation - detailed activity for a radio or a group of radios.

Multi region support

- SYSCON Provides full control of the system from one terminal.

SYSCON In System Example

